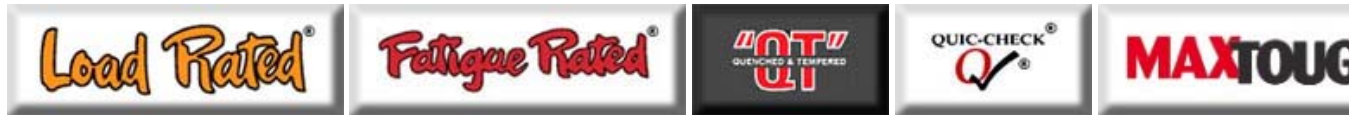




# Crosby® Bolt-Type Shackles

Page 063



## BOLT TYPE ANCHOR SHACKLES



**G-2130 S-2130**

BoltType Anchor shackles with thin head bolt - nut with cotter pin. Meets the performance requirements of Federal Specifications RR-C-271D Type IVA, Grade A Class 3, except for those provisions required of the contractor. For additional information, see page [349](#).



View Video



View Video

## BOLT TYPE CHAIN SHACKLES



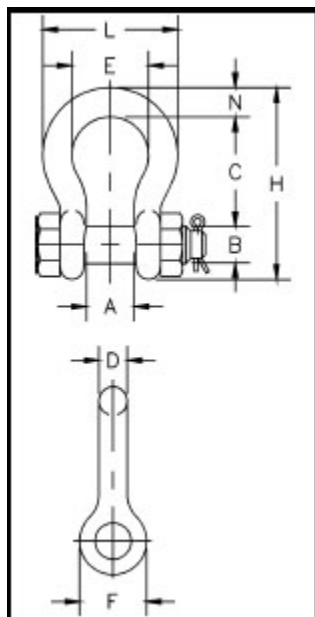
**G-2150 S-2150**

Bolt Type Chain shackles. This bolt - nut with cotter pin. Meets performance requirements of F Specifications RR-C271D Type Grade A, Class 3, except for the provisions required of the contractor. For additional information, see page [349](#).

### Impact Properties

- Working Load Limit permanently shown on every shackle. Capacities 1/3 thru 150 metric tons.
- Forged — Quenched and Tempered, with alloy pins.
- Hot Dip galvanized or Self Colored.
- Fatigue rated.
- Crosby products meet or exceed all the requirements of ASME B30.26 including identification, ductility, design factor, proof load and temperature requirements. Importantly, Crosby products meet other critical performance requirements including fatigue life, impact properties and material traceability, not addressed by ASME B20.26.
- Shackles 55 metric tons and smaller can be furnished proof tested with certificates to designated standards, such as ABS, DNV, Lloyds, or other certification.
- Shackles 85 metric tons and larger can be provided as follows.
  - Non Destructive Tested
  - Serialized Pin and Bow
  - Material Certification (Chemical) Certification must be requested at time of order.
- Look for the Red Pin® . . . the mark of genuine Crosby quality.

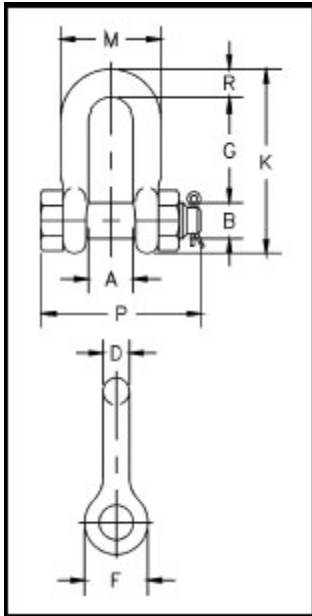
### Shackle Performance



Nominal Size (in.)	Working Load Limit (t)*	Stock No.		Weight Each (lbs.)	Dimensions (in.)											Tol
		G-2130	S-2130		A	B	C	D	E	F	H	L	N	C		
3/16	1/3‡	1019464	—	.06	.38	.25	.88	.19	.60	.56	1.47	.98	.19	.06		
1/4	1/2	1019466	—	.11	.47	.31	1.13	.25	.78	.61	1.84	1.28	.25	.06		
5/16	3/4	1019468	—	.22	.53	.38	1.22	.31	.84	.75	2.09	1.47	.31	.06		
3/8	1	1019470	—	.33	.66	.44	1.44	.38	1.03	.91	2.49	1.78	.38	.13		
7/16	1-1/2	1019471	—	.49	.75	.50	1.69	.44	1.16	1.06	2.91	2.03	.44	.13		
1/2	2	1019472	1019481	.79	.81	.64	1.88	.50	1.31	1.19	3.28	2.31	.50	.13		
5/8	3-1/4	1019490	1019506	1.68	1.06	.77	2.38	.63	1.69	1.50	4.19	2.94	.69	.13		
3/4	4-3/4	1019515	1019524	2.72	1.25	.89	2.81	.75	2.00	1.81	4.97	3.50	.81	.25		
7/8	6-1/2	1019533	1019542	3.95	1.44	1.02	3.31	.88	2.28	2.09	5.83	4.03	.97	.25		
1	8-1/2	1019551	1019560	5.66	1.69	1.15	3.75	1.00	2.69	2.38	6.56	4.69	1.06	.25		
1-1/8	9-1/2	1019579	1019588	8.27	1.81	1.25	4.25	1.13	2.91	2.69	7.47	5.16	1.25	.25		
1-1/4	12	1019597	1019604	11.71	2.03	1.40	4.69	1.29	3.25	3.00	8.25	5.75	1.38	.25		
1-3/8	13-1/2	1019613	1019622	15.83	2.25	1.53	5.25	1.42	3.63	3.31	9.16	6.38	1.50	.25		
1-1/2	17	1019631	1019640	20.80	2.38	1.66	5.75	1.53	3.88	3.63	10.00	6.88	1.62	.25		
1-3/4	25	1019659	1019668	33.91	2.88	2.04	7.00	1.84	5.00	4.19	12.34	8.80	2.25	.25		
2	35	1019677	1019686	52.25	3.25	2.30	7.75	2.08	5.75	4.81	13.68	10.15	2.40	.25		

**G-2130 S-2130**

2-1/2	55	1019695	1019702	98.25	4.13	2.80	10.50	2.71	7.25	5.69	17.90	12.75	3.13	.25
3	† 85	1019711	—	154.00	5.00	3.30	13.00	3.12	7.88	6.50	21.50	14.62	3.62	.25
3-1/2	† 120 ‡	1019739	—	265.00	5.25	3.76	14.63	3.62	9.00	8.00	24.88	17.02	4.38	.25
4	† 150 ‡	1019757	—	338.00	5.50	4.26	14.50	4.00	10.00	9.00	25.68	18.00	4.56	.25



**G-2150 S-2150**

Nominal Size (in.)	Working Load Limit (t)*	Stock No.		Weight Each (lbs.)	Dimensions (in.)									Tolerance
		G-2150	S-2150		A	B	D	F	G	K	M	P	R	
1/4	1/2	1019768	—	.13	.47	.31	.25	.62	.91	1.59	.97	1.56	.25	.06
5/16	3/4	1019770	—	.23	.53	.38	.31	.75	1.07	1.91	1.15	1.82	.31	.06
3/8	1	1019772	—	.33	.66	.44	.38	.92	1.28	2.31	1.42	2.17	.38	.13
7/16	1-1/2	1019774	—	.49	.75	.50	.44	1.06	1.48	2.67	1.63	2.51	.44	.13
1/2	2	1019775	1019784	.75	.81	.64	.50	1.18	1.66	3.03	1.81	2.80	.50	.13
5/8	3-1/4	1019793	1019800	1.47	1.06	.77	.63	1.50	2.04	3.76	2.32	3.56	.63	.13
3/4	4-3/4	1019819	1019828	2.52	1.25	.89	.75	1.81	2.40	4.53	2.75	4.15	.81	.25
7/8	6-1/2	1019837	1019846	3.85	1.44	1.02	.88	2.10	2.86	5.33	3.20	4.82	.97	.25
1	8-1/2	1019855	1019864	5.55	1.69	1.15	1.00	2.38	3.24	5.94	3.69	5.39	1.00	.25
1-1/8	9-1/2	1019873	1019882	7.60	1.81	1.25	1.13	2.68	3.61	6.78	4.07	5.90	1.25	.25
1-1/4	12	1019891	1019908	10.81	2.03	1.40	1.25	3.00	3.97	7.50	4.53	6.69	1.38	.25
1-3/8	13-1/2	1019917	1019926	13.75	2.25	1.53	1.38	3.31	4.43	8.28	5.01	7.21	1.50	.25
1-1/2	17	1019935	1019944	18.50	2.38	1.66	1.50	3.62	4.87	9.05	5.38	7.73	1.62	.25
1-3/4	25	1019953	1019962	31.40	2.88	2.04	1.75	4.19	5.82	10.97	6.38	9.33	2.12	.25
2	35	1019971	1019980	46.75	3.25	2.30	2.10	5.00	6.82	12.74	7.25	10.41	2.36	.25
2-1/2	55	1019999	1020004	85.00	4.12	2.80	2.63	5.68	8.07	14.85	9.38	13.58	2.63	.25
3	† 85	1020013	—	124.25	5.00	3.25	3.00	6.50	8.56	16.87	11.00	15.13	3.50	.25

\* NOTE: Maximum Proof Load is 2.0 times the Working Load Limit. Minimum Ultimate Strength is 6 times the Working Load Limit. For Working Load Limit reduction due to side loading applications, see page 68.

† Individually Proof Tested with certification.

‡ Furnished in Anchor style only. Furnished with Round Head Bolts with welded handles.



Copyright © 2005 The Crosby Group, Inc. All Rights Reserved